

Reimagining Ultrasound Education

Preparing You for the Moments That Matter.

With enhanced animation for the most realistic ultrasound training on the market, Vimedix combines in-person and remote practice that reaches your learners wherever they are.

Through live learning, recorded sessions and self-directed activities offered by Vimedix, you can customize your imaging curriculum and track your students' progress over time.

Easily integrate Vimedix with video-conferencing platforms and open the door to remote learning. Learners can use their computer mouse to practice basic ultrasound techniques through interactive, web-based workshops before beginning hands-on education.

Pair Vimedix with Microsoft HoloLens 2 for even more immersive training. VimedixAR uses augmented reality to create a three-dimensional panoramic image of the anatomy and structures to accelerate learning and retention.



DISCOVER HOW VIMEDIX IS MAKING WAVES IN ULTRASOUND EDUCATION



3D/4D Scans and Multiplanar Reconstruction (Mpr)

The first ultrasound simulator to offer volumetric scanning in real-time with detailed views of the normal heart and advanced pathologies.



Self-Directed Learning

The first ultrasound simulator to offer volumetric scanning in real-time with detailed views of the normal heart and advanced pathologies.



Enhanced Instructional

Redesigned instructional content for better curriculum integration and user flexibility.



Performance Metrics

Integrated performance metrics allow faculty to track students' progress over time.



TGAUS/TEE Training Exercises

Invaluable diagnostic and monitoring guidelines on cardiac, pulmonary and abdominal structures.



One-Platform Training

Easily toggle between cardiac, pulmonary, abdominal and OB-GYN modalities for a thorough ultrasound learning experience.



Comprehensive Library of Pathologic Cases

More than 200 pathologies to load and scan various conditions.

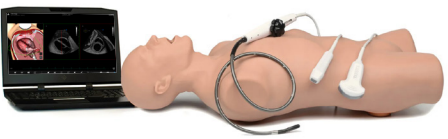
TOOLS TO IMPROVE PATIENT OUTCOMES

Providing safe, quality care is a top priority. That's why Vimedix portfolio offers options for various scenarios.



ABDOMEN

- Cover general imaging pathologies: abdomen, lung, and FAST.
- Enhance training with cardiac packages.
- Develop a comprehensive curriculum.



CARDIAC

- Access diverse cardiac pathologies for transthoracic and transesophageal imaging.
- Use phased array and transesophageal transducers for advanced training scenarios.
- Incorporate abdominal pathologies with a curvilinear transducer to expand learning.



OB/GYN & BREAST

- Explore gynecology and obstetrics pathologies across all trimesters, including fetal echo.
- Enhance learning with the curvilinear probe.
- Deepen skills with linear and transvaginal scanning.

VIMEDIX HARDWARE

Vimedix Abdominal Ultrasound Simulator

Included Hardware

Curvilinear Transducer	Male Manikin
Laptop, Mouse, Cables, Foot Pedal	One year of Express support and maintenance

Vimedix 1st, 2nd and 3rd Trimester Obstetrics, Gynecology, and Breast Ultrasound Simulator

Included Hardware

Curvilinear Transducer	Female Manikin
Laptop, Mouse, Cables, Foot Pedal	One year of Express support and maintenance

Optional Hardware

Transvaginal Transducer	3rd Trimester Belly
Linear Array Transducer	

Vimedix Transesophageal (TEE) Cardiac Ultrasound Simulator

Included Hardware

Transesophageal Transducer	Male Manikin
Laptop, Mouse, Cables, Foot Pedal	One year of Express support and maintenance

Vimedix Transthoracic (TTE) Cardiac Ultrasound Simulator

Included Hardware

Phased Array Transducer	Male Manikin
Laptop, Mouse, Cables, Foot Pedal	One year of Express support and maintenance

For more information about Vimedix modules and packages, or to request a demo, contact: srqaccountmanagers@elevatehealth.net